



Logitech® Squeezebox™ Radio
Wi-Fi Internet Radio

Quick start
guide



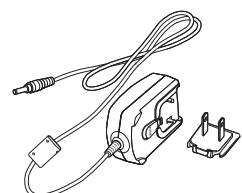
Thank you!

Thank you for purchasing a Logitech® Squeezebox™ Radio Wi-Fi Internet radio. We hope you have as much fun using it as we did creating it for you.

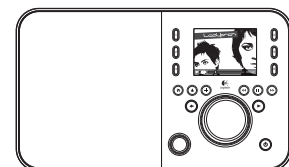
This guide covers basic hardware setup. Once hardware setup is complete, the Squeezebox Radio screens will guide you through the rest of the setup process. The **Troubleshooting section** at the end of the guide covers issues that you might encounter during the setup process.

For full documentation of Squeezebox Radio functionality, a **feature guide** is available at www.mysqueezebox.com.

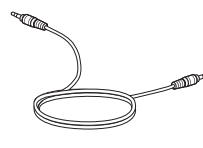
Package contents



Power adapter with removable plug



Squeezebox Radio



3.5mm audio cord – Connects your iPod® or MP3 player

Getting help

For more information about your Squeezebox, go to www.mysqueezebox.com.

For phone support, call:

- Monday through Friday, from 6:00 a.m. to 9:00 p.m. (0600-2100) Pacific time
- Saturday and Sunday, from 7:00 a.m. to 5:00 p.m. (0700-1700) Pacific time

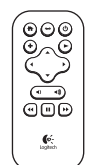
At the following numbers:

+1 (877) 887-8889 (Toll-free in North America)

+1 (646) 454-3237 (For all other countries)

Optional Accessory Pack

(www.logitech.com)



Remote control



Rechargeable battery pack



What you need to get started

To start using your Squeezebox Radio, you will need:

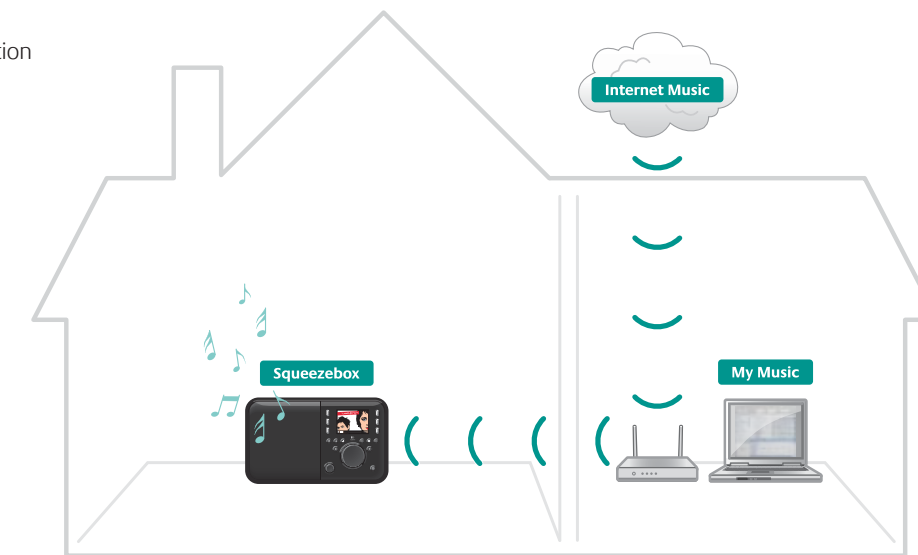
- A broadband Internet connection (for example, DSL or cable modem)
- The name and password of your wireless network; or a wired Ethernet connection

Find a good location

The compact size of the Squeezebox Radio makes it very easy to enjoy music anywhere in your home or office. Just make sure the location has Wi-Fi coverage or an Ethernet connection and a power outlet (not required if you have the optional rechargeable battery pack).

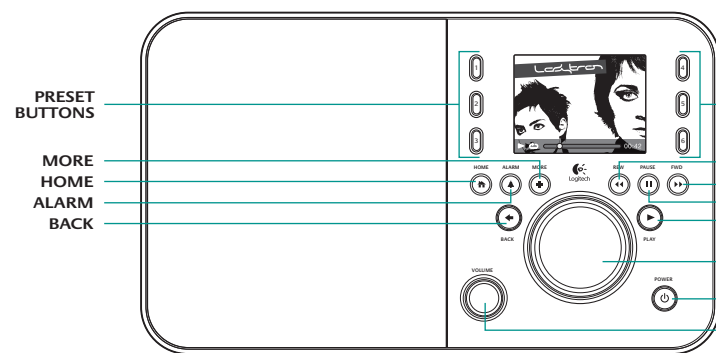
	If you will be adding Squeezebox Radio to a wireless network, make sure that your Squeezebox is within range of your wireless network.
	If you will be setting up a wired connection, locate Squeezebox Radio within reach of an Ethernet jack.

* Ethernet cable not included



A typical Squeezebox Radio setup

Squeezebox Radio at a glance



Squeezebox Front

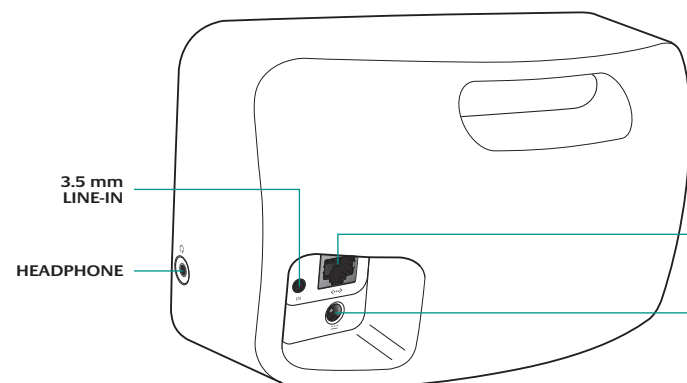
PRESET
BUTTONS

MORE
HOME
ALARM
BACK

PRESET
BUTTONS

REWIND
FORWARD
PAUSE/STOP
PLAY

PUSHBUTTON
KNOB
POWER
VOLUME



Squeezebox Back

3.5 mm
LINE-IN

HEADPHONE

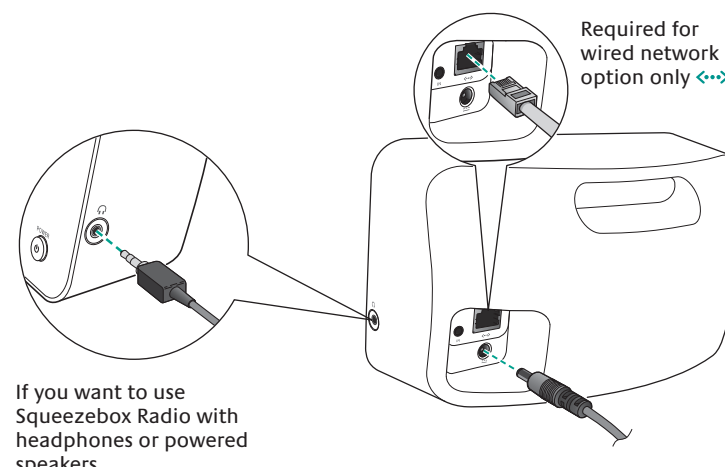
ETHERNET

POWER

RECHARGEABLE
BATTERY
COMPARTMENT

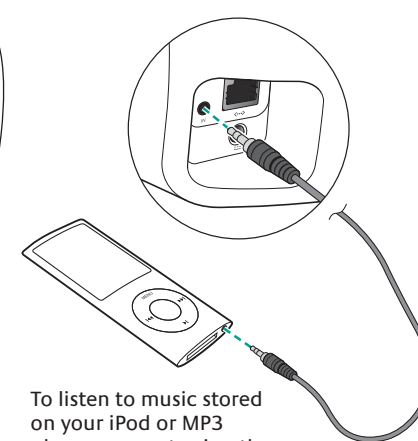
1

Connect Squeezebox Radio



If you want to use Squeezebox Radio with headphones or powered speakers.

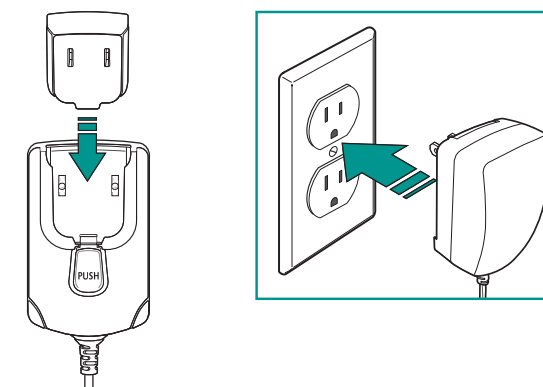
Required for wired network option only <-->



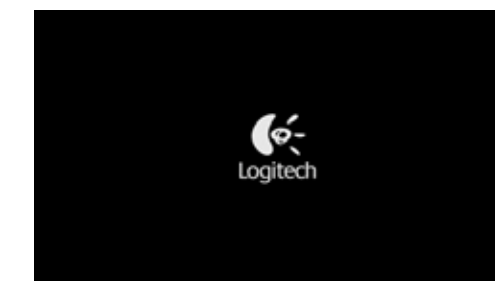
To listen to music stored on your iPod or MP3 player, connect using the included cord.

2

Plug in Squeezebox



After plugging in your Squeezebox Radio, it will automatically turn on after a few seconds.



Squeezebox Radio startup screen